

LET'S BEE FRIENDS!

Activity Book





DID YOU KNOW?

There are varieties of bees species in Singapore, with around 120 species found in habitats ranging from forests to rooftop gardens.

**Follow me to learn more
about bees in Singapore!**

Look around in your garden!

Look around in your garden You may see bees flying in and out of their nests in wooden poles, branches and even the soil!



Asian Honey Bee



Broad-handed Carpenter



Himalayan Cloak-and-Dagger Bee



Broad-headed Leafcutter



COLOR WITH ME!



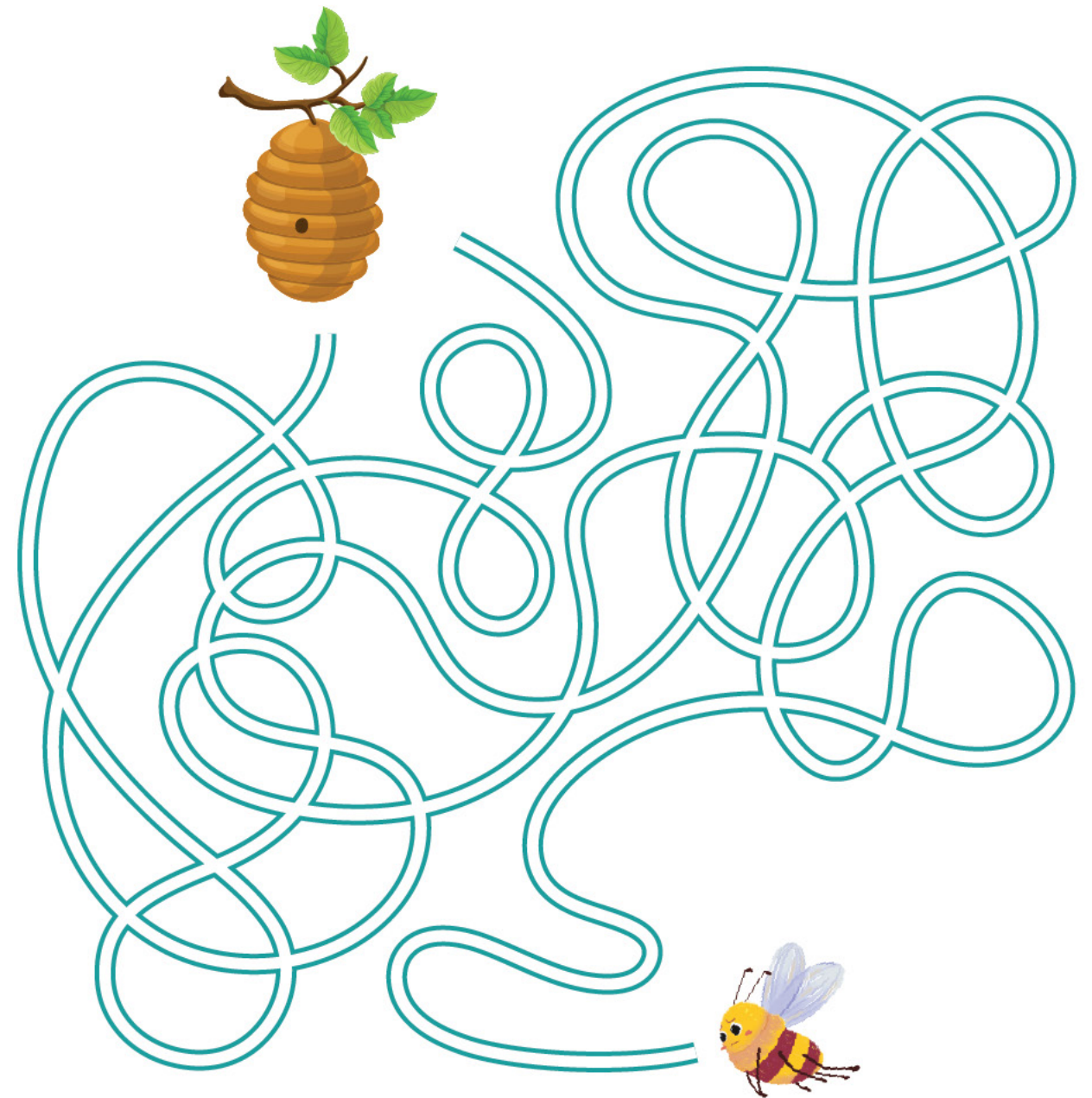
DID YOU KNOW?

Only 4% of all bees species are able to produce honey. in Singapore, we have several honey bee species like the Asian Honey Bee, Black Dwarf Honey Bee and Giant Honey Bee.

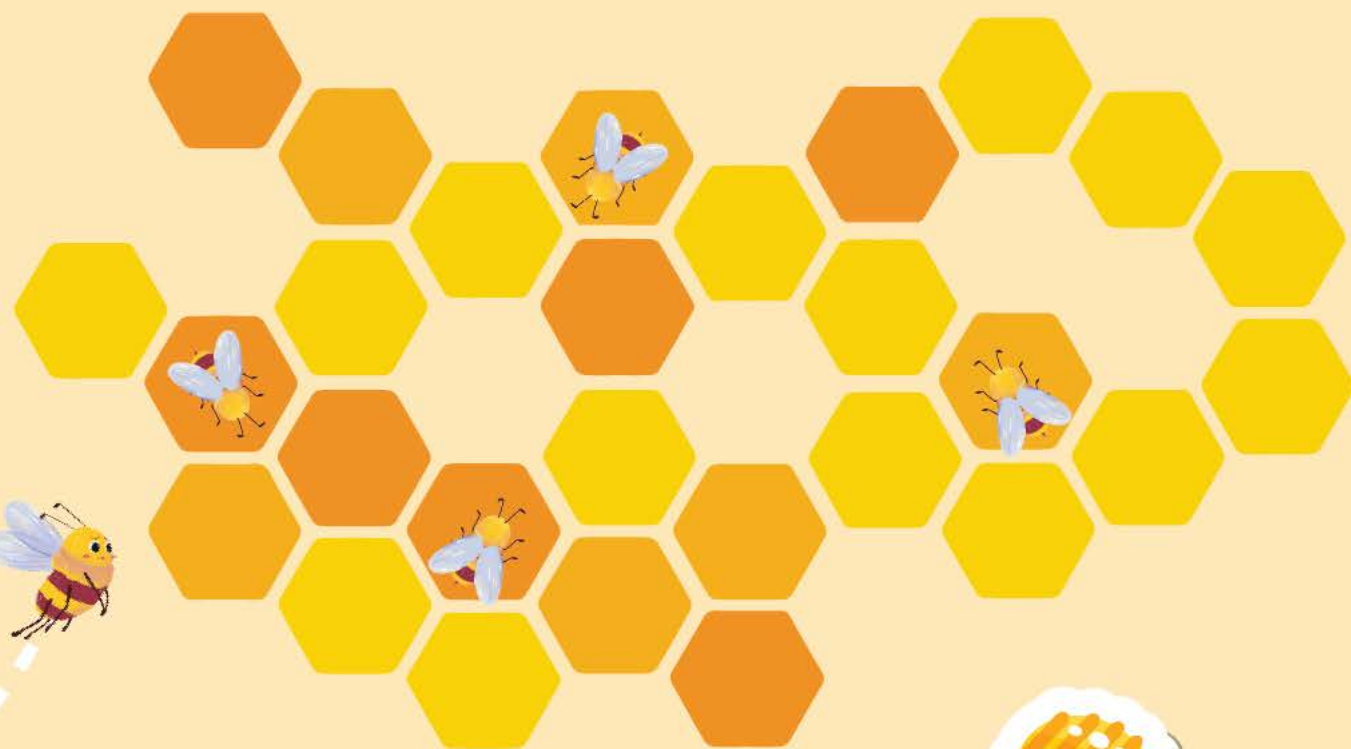
Other species that produces a type of honey is from the bumblebee family which does not occur in Singapore



Get this busy bee to the exit!



DID YOU KNOW?



How do bees make honey?

A worker bee sucks up the nectar through a long, thin tube called a proboscis and keeps it in a special honey stomach which will break down the complex sugars of the nectar.

Once the worker returns to the hive, forager bees pass the nectar to each other from mouth to mouth and pack the nectar into hexagon-shaped cells in the honeycomb that are made of beeswax.



Fill in the blanks

1. Worker bees _____ to tell the others when she has found a good source of food.
2. Individual honeycomb has _____ sides.
3. A single worker bee can sting a mammal _____ time/s.
4. Honey bees have _____ wings.
5. Male bees are called _____.
6. Two main types of dances honey bees use to communicate are called _____ and _____.



DID YOU KNOW?

what do bees sound like?



Scan here
to find out!

why do bees buzz?

The wings of some species of bees flap very rapidly. These wing-beats create vibrations in the wind near them.

When these vibrations reach our ears, we hear a buzz.

Scrambled words



IHEBVEE



EBE



YOHEN



NECOHOYBM



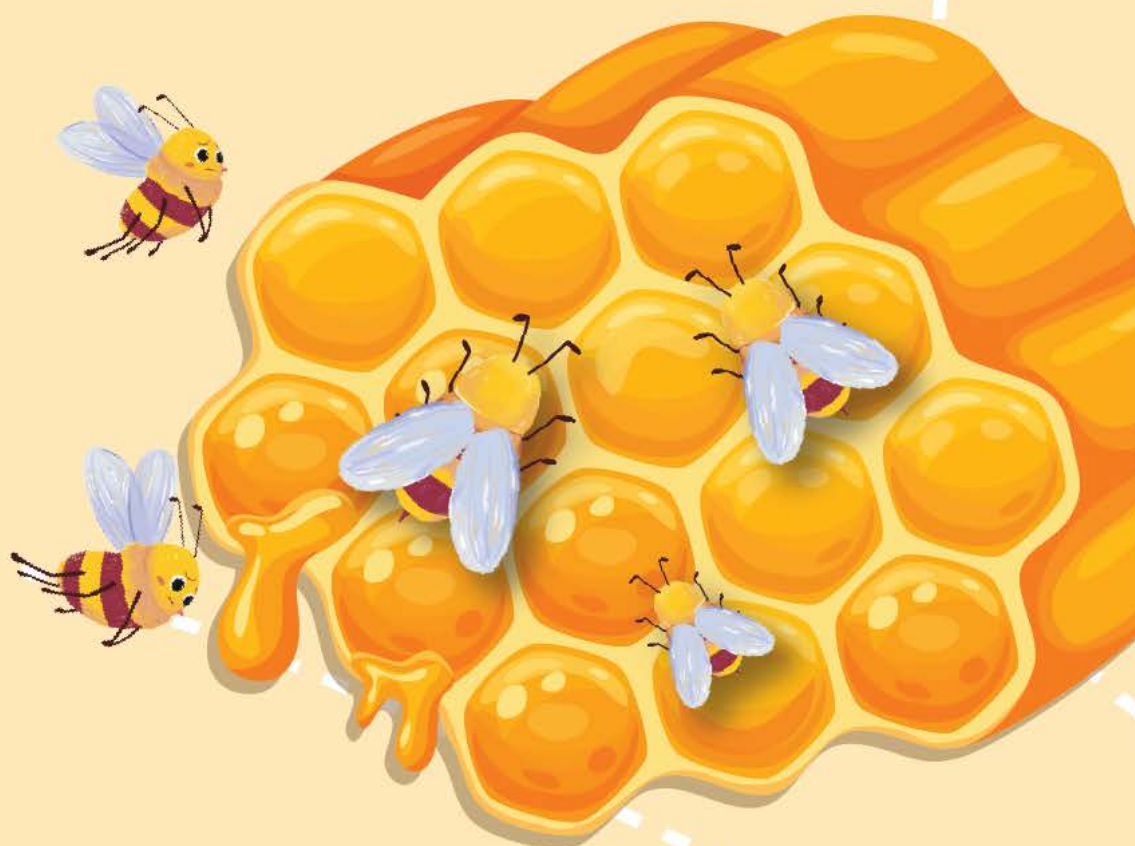
WEFLOR

DID YOU KNOW?



A Queen Bee can produce 2,000 eggs a day. Fertilised eggs become females and unfertilised eggs become males, with the help of pheromones.

If the queen bee dies, workers will create a new queen by selecting a young larva (the newly hatched baby insects) and feeding it a special food called "royal jelly". This enables the larva to develop into a fertile queen.



Unscramble The Sentences And write Them Down.

FLEW, FLOWER, TO, THE, THE, BEE

IS, SWEET, THE, HONEY, VERY

HARDWORKING, BEES, INSECTS,
ARE, VERY





**Scan here for
more information**



